

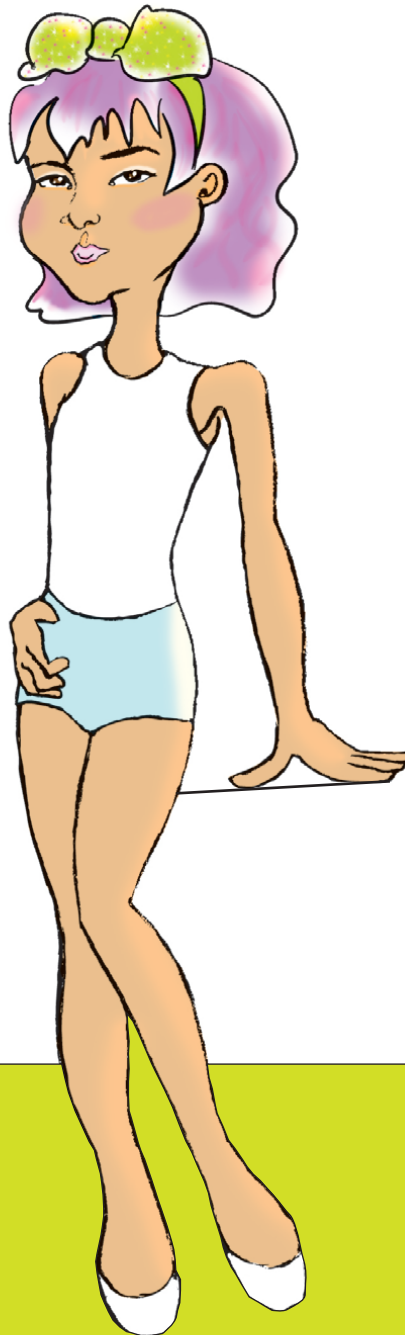
# Paper Doll page 1

\* With paper scissors, cut along the outer boundary lines of both the paper doll and her outfits. When cutting around the finer parts you may wish to use an art knife and cutting board.

\* Curve the paper doll base, bringing the side ends together.

\* Tape the side ends of the base together.

\* Place the outfits over the paper doll and fold the tabs to the back.



About me:

---

---

---

---

---

---

---

---

---

---

# Paper Doll page 2



by Melissa Gaggiano for [mypoppet.com.au/makes](http://mypoppet.com.au/makes)