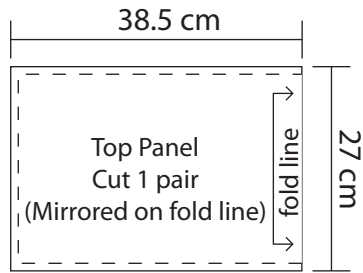
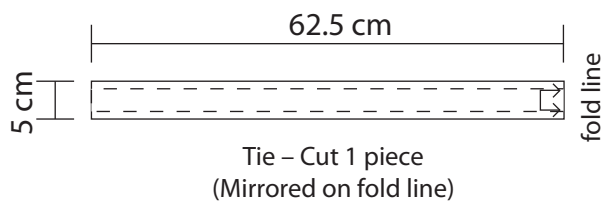
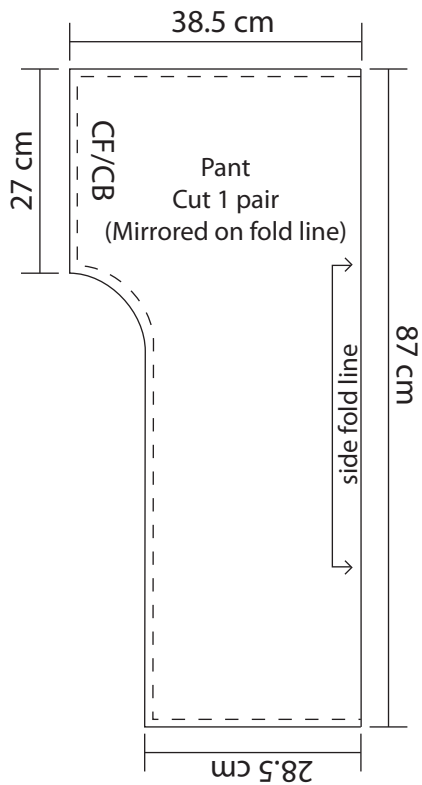


# Thai Fishermen Pants Pattern Ref

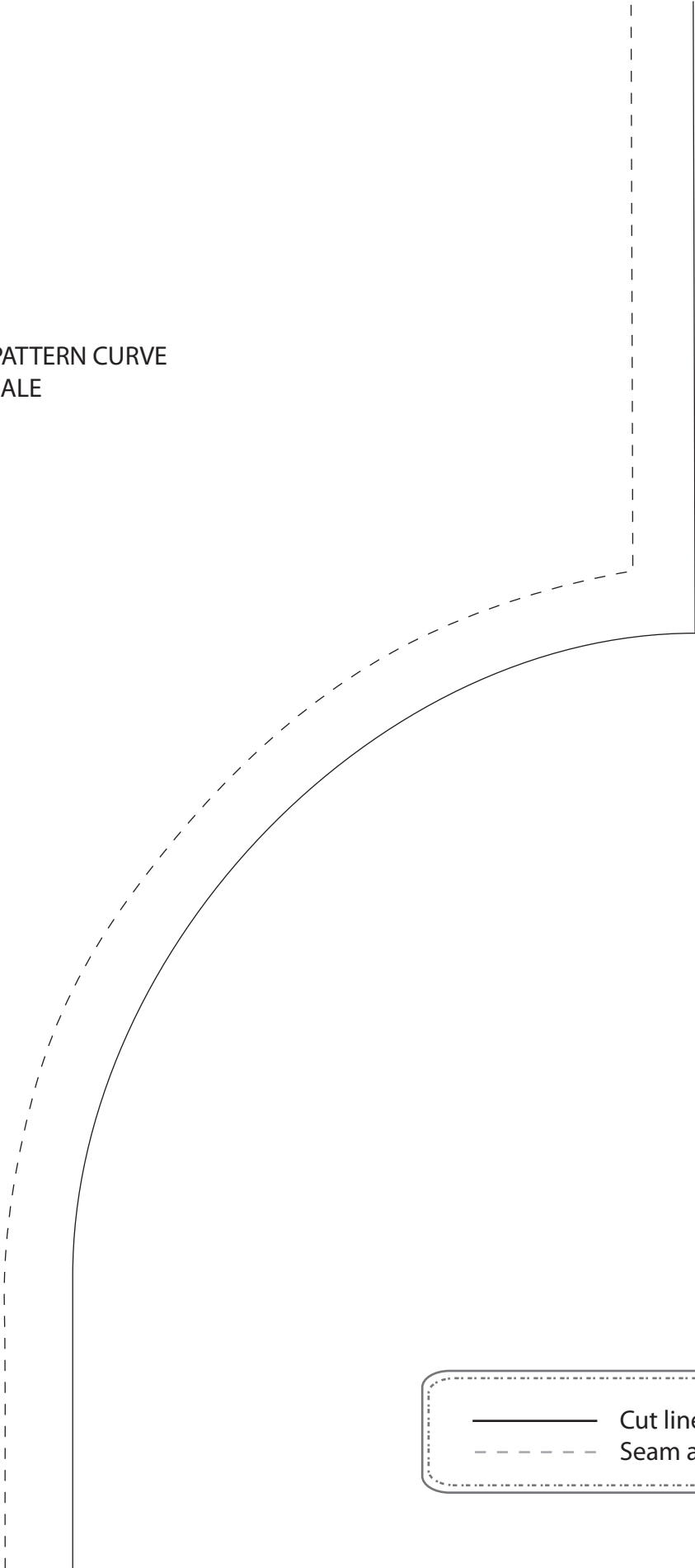


Note: This pattern is for a size 12-14 body. To increase the scale of the pattern for a larger clothing size you can extend the length of the pant leg hem, and the position of the side fold line on the pant and top panel.



# Thai Fishermen Pants Template

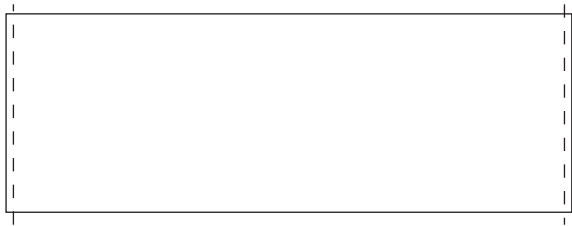
SIDE PATTERN CURVE  
1:1 SCALE



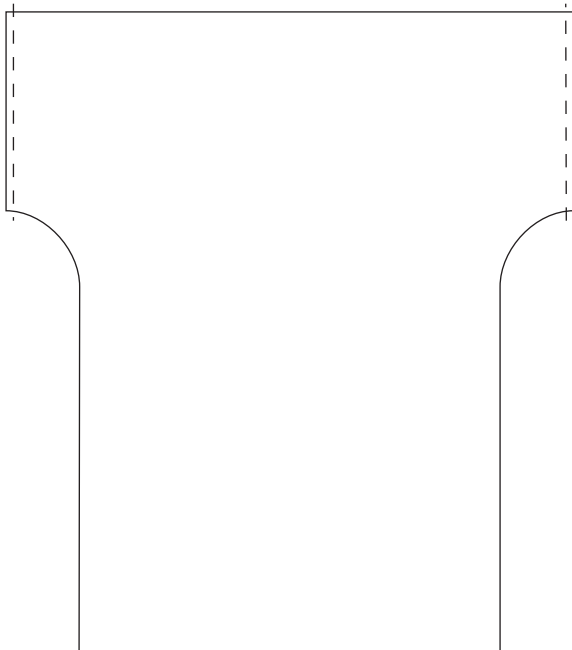
— Cut line  
- - - Seam allowance

# Thai Fishermen Pants Illustrated Steps

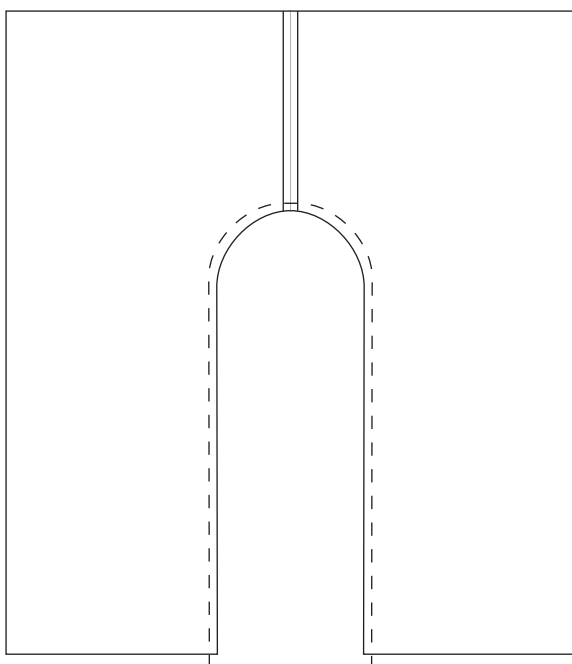
Step 5



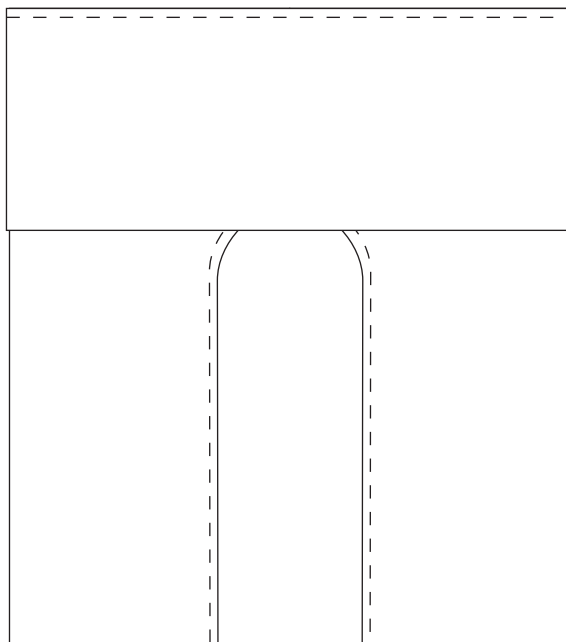
Step 6



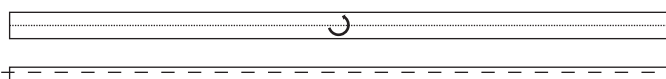
Step 7



Step 9



Step 12



Step 15

